

Artemisinin and derivatives

The need for universal HPLC detection in analytical laboratories is widespread. While several detection technologies (e.g., low wavelength UV, refractive index, evaporative light scattering, chemiluminescent nitrogen detectors) are currently being used, there is significant room for improvement in performance characteristics such as sensitivity, dynamic range, consistency of response factors and gradient or solvent compatibility.

To help address the many challenges of universal detection, ESA has developed the Corona CAD™ detector. This novel technology offers many benefits to analytical scientists including:

- High Sensitivity - Low ng limits of detection.
- Consistent Response Factors - Response magnitude does not significantly depend on analyte properties (e.g. molar absorptivity, proton affinity).
- Broad and Useful Dynamic Range - 4 orders of magnitude (ng - µg quantities).
- Excellent Reproducibility - Typically less than 2% RSD.
- Broad Applicability - Can be used with a wide variety of HPLC conditions to measure virtually any nonvolatile analyte including proteins, lipids, carbohydrates and small molecules.
- Ease of Use - Easy setup. Uses minimal bench space and requires only gas input pressure and signal output range to be set.

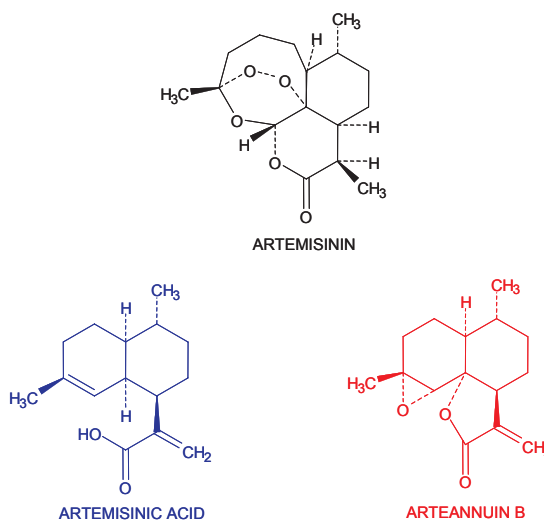


Figure 1. Structures of artemisinin and derivatives.

This application note describes the use of the Corona CAD for the measurement of the antimalarial artemisinin and its derivatives (Figure 1). The method has a limit of detection of <50ng, on column (Figure 2) and a dynamic range that covers ng to µg levels (Figure 3). It illustrates the use of the Corona for pharmaceutical agents.

Corona parameters

Gas: 35psi via nitrogen generator
Filter: none
Range: 200pA

HPLC Parameters:
Mobile Phase: 60% aqueous acetonitrile, pH 3 with TFA
Flow Rate: 2mL/min
Column: Shiseido MG C18 4.6 x 75mm; 3µm
Column Temperature: ambient
Injection Volume: 10µL

Sample preparation

Stock - 1mg/mL of each standard dissolved in acetonitrile.
Dilutions in acetonitrile.

The Corona™ Charged Aerosol Detector

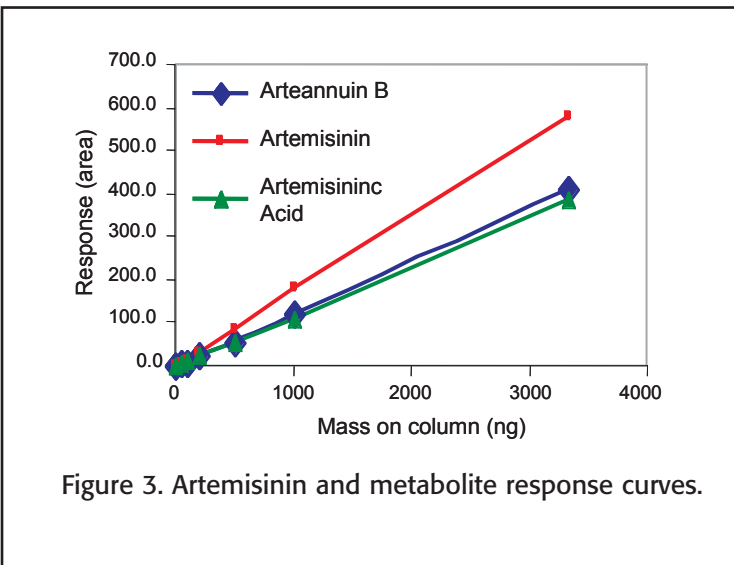
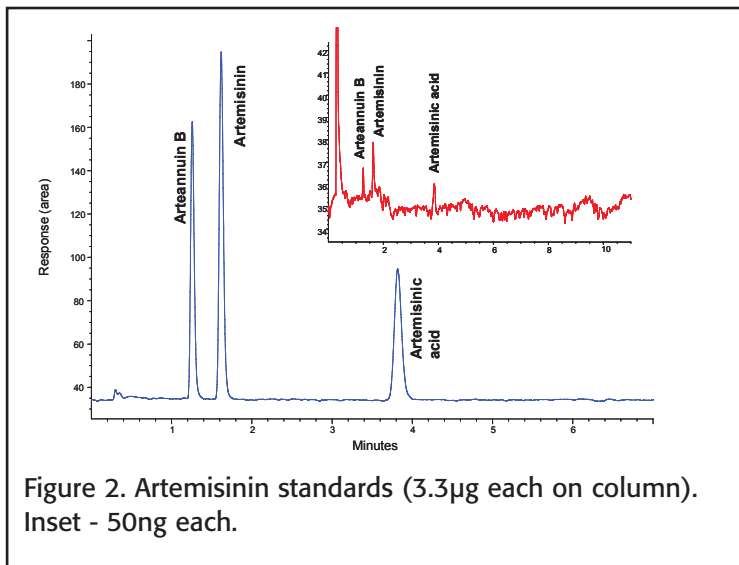


Figure 2. Artemisinin standards (3.3µg each on column).
Inset - 50ng each.

Figure 3. Artemisinin and metabolite response curves.

Conclusions

The Corona CAD provides universal detection of non-volatile analytes with response independent of chemical properties, a wide dynamic response range, high sensitivity and good precision. These characteristics, along with reliability and simple operation, make this a superior detector for a wide range of HPLC analyses.

For more information about this application, the Corona CAD, or charged aerosol detection visit www.coronacad.com. We are interested in your opinions and are available to answer any questions you may have: please contact a technical representative at 978.250.7082, or if e-mail is more convenient, send your questions to coronacad@esainc.com.

Ordering information

Description	Part Number
Corona	70-6350 (100/120V) 70-6351 (230/240V)
Thermal Organizer Module	70-5499TA
Nitrogen generator	70-6003
Pump, model 582	70-4050
Autosampler, model 542	70-4152
Quaternary low pressure gradient and degasser	70-5260
Elite software including PC	70-5073
Column, MD150 x 3	70-0636



ESA, Inc. • 22 Alpha Road
Chelmsford, MA 01824-4171
U.S.A.
Tel: (978) 250-7000
Fax: (978) 250-7090
www.esainc.com
www.coronacad.com

ESA Analytical • Brook Farm
Dorton, Aylesbury
Buckinghamshire
HP18 9NH
England
Tel: 44 (0)1844 239381
www.esainc.com

ESA, Inc. is an ISO 9001 and 13485 Certified Company
Corona™ and CAD™ are trademarks of ESA, Inc.
ESA® is a registered trademark of ESA, Inc.
The Corona CAD is covered by multiple patents